





LUCIA	STYLE	PATRICIA
Cow Leather	UPPER	Cow Leather
n/a	LINING	PU
EVA+Rubber	SOLE	EVA+Rubber
34-41	SIZE	34-41



OLIVIA	STYLE	VICTORIA
Cow Leather	UPPER	Cow Leather
Mesh	LINING	Mesh
EVA+Rubber	SOLE	EVA+Rubber
34-41	SIZE	34-41



SOPHIA	STYLE	ANGELIA
Cow Leather	UPPER	Cow Leather
PU	LINING	PU
EVA+Rubber	SOLE	EVA+Rubber
34-41	SIZE	34-41



GLORIA	STYLE	MARIA
Cow Leather	UPPER	Cow Leather
Micro-fiber	LINING	PU
Gum Rubber	SOLE	Gum Rubber
35-40	SIZE	35-40





GENUINE LEATHER
Upper is made of soft and supple genuine cow leather.



EASY CLEANING
The shoe can be easily cleaned with a damp cloth.



BREATHABLE UPPER
The breathable leather upper keeps your feet dry.



SHOCK ABSORBING
Air unit in heel part absorbs impacting shock.



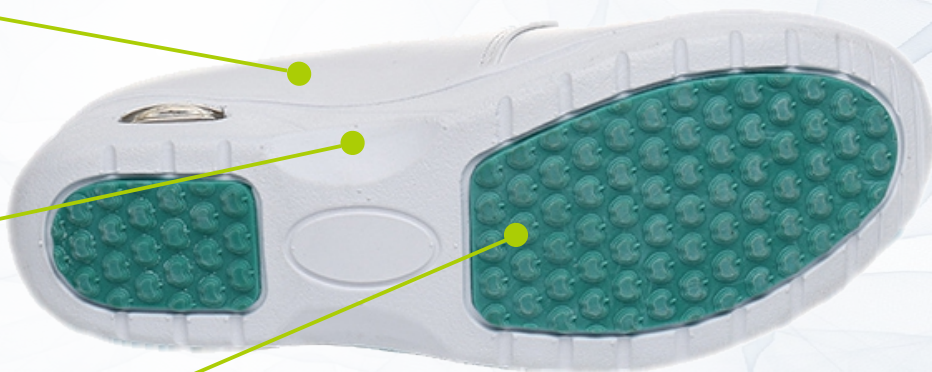
EXTRA CUSHIONING
The soft & thick Latex foam insole provides responsive cushioning.



LIGHT WEIGHT
The high-performance EVA midsole makes the shoe very light.



FLEXIBLE SOLE
The EVA midsole is very soft and flexible.



SLIP RESISTANT (SRC)
The rubber outsole provides excellent grip to the ground.



REMOVABLE INSOLE
Removable insole makes you easy to clean it or replace it with another one.

Applications

This collection is suitable for those who walk and stand for a long time daily. These shoes are recommended for:

- ◆ Nurses and caregivers
- ◆ Healthcare professionals
- ◆ Wellness and beauty center professionals

Size chart

EU	34	35	36	37	38	39	40	41
UK	2	2.5	3.5	4	5	5.5	6.5	7
US	4.5	5	6	6.5	7.5	8	9	9.5

Stony Industries Limited

+86 159 9985 5300
 stone@stonygroup.com
 www.stonygroup.com
 Room. 803, Chevalier House, 45-51 Chatham Road South, Tsim Sha Tsui, Kowloon, Hong Kong